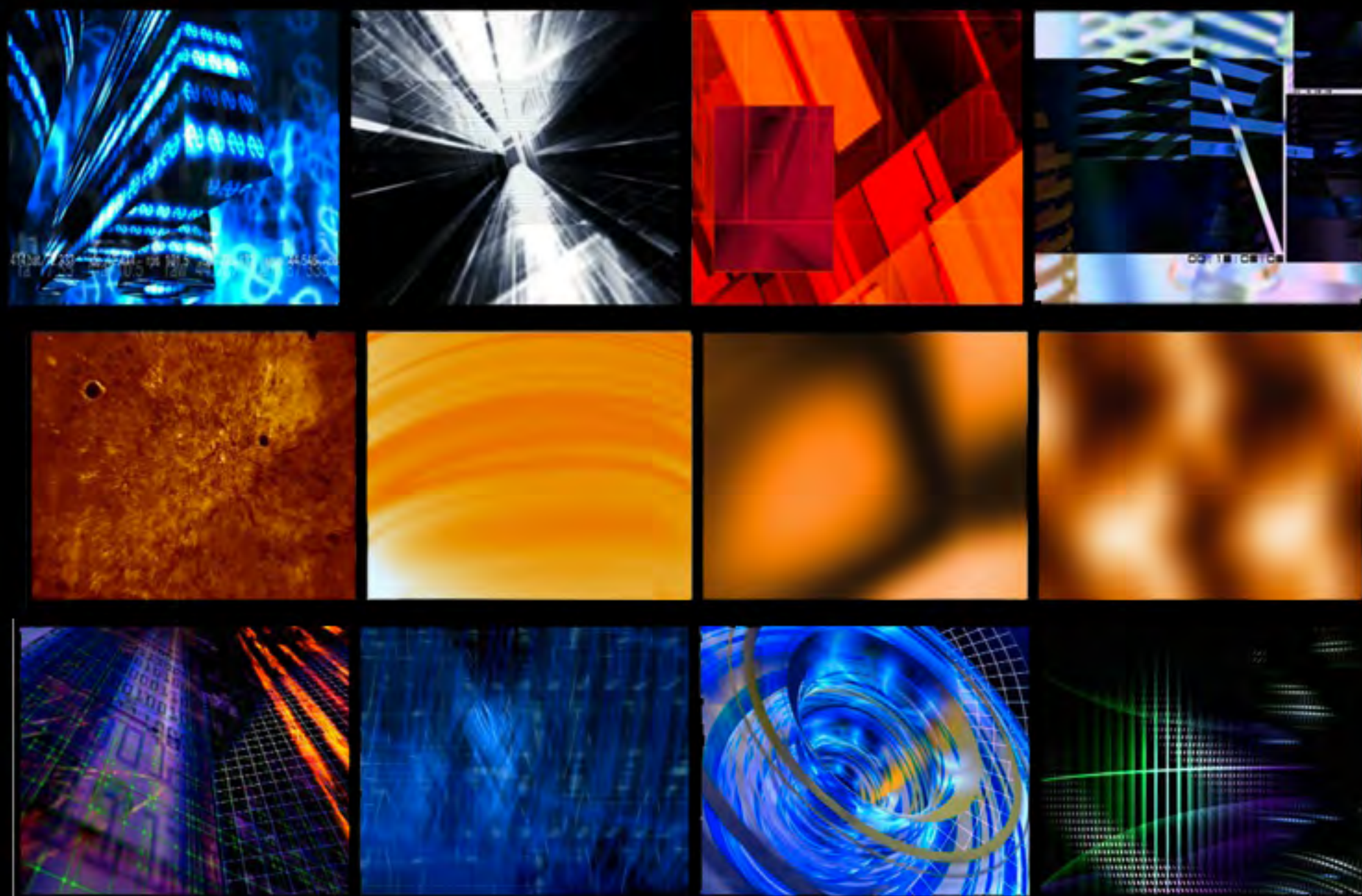


CATALYST MEDIA SERVERS

POWERED BY: MAC OS X



Catalyst Info:

Powered by:

- Mac Pro Dual Core Intel Xeon 2.66ghz
- 4 Gigs of Ram
- ATI Radeon X1900 Graphics card w/ 512mb VRam (2 x Dual DVI)
- 60 gig OCZ Vertex SSD for content playback drive
- Case can be configured for single Mac Pro or double Mac Pros for redundant backup

Features:

Control:

- Artnet control standard
- DMX, RS232, and MIDI control (optional equipment required)
- Matrix video switcher control
- Custom RS232 control for projectors and peripheral equipment
- RS422 (Sony 9 pin protocol) and RS422 serial control capabilities
- Capable of multiple Catalyst synchronization

Content:

- Preloaded with several folders of stock content
- Extensive content library available to help meet the needs of your show
- Contacts with custom content creators to make your show truly unique

Interface:

- Simple and intuitive graphic user interface (GUI)
- Content stored in easy to access folders on SSD Playback Drive
- Built in web server for remote monitoring control and diagnostics

LIGHTING PROGRAMMER INC.
ORLANDO, FLORIDA
407.340.6288

HTTP://WWW.LIGHTINGPROGRAMMER.COM



Playback:

- Up to 32 layers of digital media with full effects capabilities on each layer (initially set up for 8 layers)
- Cross fading between all 32 layers
- High Definition support (HD)
- Movies of stills up to 4096 x 2048
- Multiple playback modes
- Ability to lock to exact monitor refresh rate
- MIDI & SMPTE playback sync capability
- Multiple layer playback
- Movie Audio output support
- Quicktime compatible codecs: AIC, Photo JPEG, DV PAL/NTSC, Animation Codec
- JPEG, TIFF, PSD, transparency supported

Pixel Mapping: (optional equipment required)

- Dynamic pixel mapping achieved using PixelMad feature via Artnet to DMX node
 - Up to 100 universes of DMX fixtures
 - Up to 5000 DMX LED fixtures
- ## Image processing:
- Up to 32 sub mixes, allowing layers to be assigned independently to multiple outputs
 - Overlapping transparent sub-mix outputs
 - Global Keystone of 3D Geometry
 - Edge blending with editable blending percentages, mix offsets, and a blending curve
 - Support for Matrox Triple Head-2-Go (optional equipment required)

Color mixing

- Real-time color effects rendering
- Real-time visual effects rendering
- Audio trigger for Spectrograph (wave form generator)
- Scaling and rotation of each layer on X, Y, and Z axis
- Aspect ratio adjustments
- Support for real-time user defined Quartz Composer compositions
- Ability to import 3-D images (.obj files)

CATALYST

LIGHTING PROGRAMMER INC.

ORLANDO, FLORIDA

407.340.6288

[HTTP://WWW.LIGHTINGPROGRAMMER.COM](http://www.lightingprogrammer.com)



Video Input: (optional equipment required)

- Support for Active Silicone LFG4 digitizers allowing up to 8 video inputs
- Support for Active Silicone Phoenix digitizers allowing up to 6 SD-SDI video inputs
- Support for Active Silicone Phoenix digitizers allowing up to 3 HD-SDI video inputs
- Support for Decklink Intensity Pro - HDMI 720p / 1080 input

Operating System:

•Mac OS 10.4 Leopard

Additional Software Pre Installed:

- Adobe AfterFX,
- Adobe Photoshop,
- Final Cut Studio 2
- °Vectorworks 2009
- °QLab

•Each Catalyst Media Server can be custom configured to meet the needs of your show.

°I am an Lighting Designer with years of experience of show production using Media Servers. I can help design your system to make things as simple as possible.

•On site configuration available

•Relationships with content creators to meet budgets

•Relationships with video companies to meet budgets

°Relationships with lighting companies to meet budgets

•Upon return a clone of your HD will be sotred so your configuration will be available for your future show.

•Each Catalyst cleaned, restored, and optimized when returned from shows.



MINI CATALYST RACK:

MAC MINI SERVER WITH 4 GIGS OF RAM

CATALYST EXPRESS SOFTWARE (4 LAYERS)

HOUSED IN A 6U SKB ROLLING CASE



CERTIFIED ASSOCIATE



OCZ Technology

MARATHON MEDIA